



**Global Finishing Solutions**



# Prep Stations

Standard Prep • Ultra Prep • Universal Workstation • CTOF

- > **Multiple Configurations**
- > **Energy-Efficient Designs**
- > **Controlled Work Environment**

# Prep Stations

## Prep Stations

Prep Stations and CTOF (Closed-Top Open-Front) paint booths provide a controlled work environment to sand, prime, and paint small areas without moving the vehicle. Prep Stations and CTOF's come in single-bay or dual-bay designs, with downdraft or semi-downdraft airflow, and in solid-back or drive-thru configuration. Optional heat units are available for high production needs.

## Energy-Efficient Lighting - ETL Listed

Inside-accessible, Electronic ballasts, T-8 color-corrected tubes

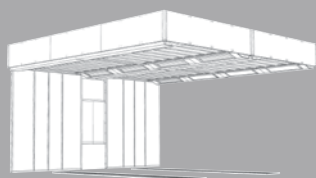


Each light fixture includes color corrected T-8 tubes for excellent color-matching and illumination while being cost effective.

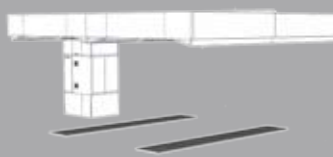
Note: Applies to Ultra Prep, Universal Workstations and CTOF.

## High-performance Airflow

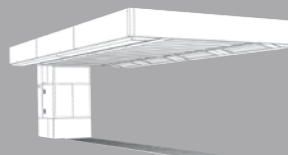
### Downdraft



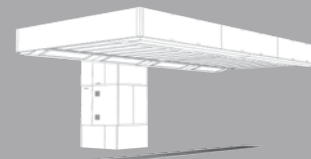
# 9235



# 9235T



# 9230



# 9230T



# 9210



# 9215



# 9220



# 9220T

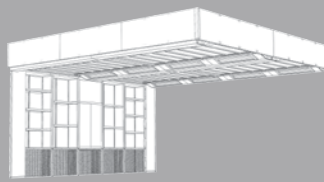
### Semi-Downdraft



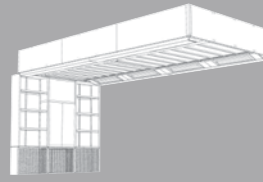
# 9315



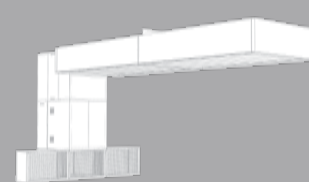
# 9310



# 9335



# 9330

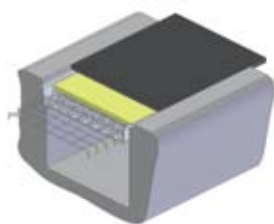


# 9320

## Standard Prep Stations

### Downdraft and Semi-Downdraft

Standard Prep stations are economical solutions for body shops in need of a quick and simple prep area. Two airflow choices, above ground exhaust box and pit style downdraft, allow easy integration into new or existing body shop layouts.



Engineered pit design for optimum balance of airflow. Raised basement available for no-pit installs.

### Specifications:

- Single-bay or Dual-bay
- Drive-in/back-out or drive-thru
- With or without overhead plenum
- White pre-coated galvanized steel
- High-performance extraction system (includes turbo fan with 10 HP)
- Air diffuser
- Pneumatic damper control
- 4-stage filtration system in plenum models
- 3-stage filtration system in standard models
- Easy change filter arrangement

### Optional:

- Automatic gun damper control
- Automatic recirculation
- Support structure
- Curtain walls

# Prep Stations

## Ultra Prep Station

### Downdraft and Semi-Downdraft

Ultra Prep Stations take the prep design to a whole new level with features such as integrated light fixtures in the ceiling plenum, single-bay or dual-bay designs, downdraft or semi-downdraft airflow. These features make it possible to have an efficient and highly productive work environment.

#### Specifications:

- Single-bay or Dual-bay
- Drive-in/back-out or drive-thru (downdraft model only)
- White pre-coated galvanized steel
- High-performance extraction system (includes turbo fan with 10 HP)
- 8 angled fluorescent light fixtures w/tubes 120/277V in single-bay models
- 16 angled fluorescent light fixtures w/tubes 120/277V in dual-bay models
- Pneumatic damper, control panel with 2 cycles (exhaust & recirculation)
- 4-stage filtration system
- Easy change filter arrangement
- Semi-downdraft models include back wall shelves
- Light wiring harness



#### Optional:

- Side-wall curtains
- Metal Walls
- Support Structure
- Automatic gun damper control
- Automatic Recirculation

## Universal Workstation

### Downdraft and Semi-Downdraft

Universal Workstations make it possible for users to prep and perform minor paint work in one area. Universal Workstations speed up the drying process and improve the overall quality of your finished product. With all the same features and options of the Ultra Prep Station and the added capability of a high-efficiency heat system.

#### Specifications:

- Single-bay or Dual-bay
- Drive-in/back-out or drive-thru (downdraft model only)
- White pre-coated galvanized steel
- Heated air supply unit with bake to 160 ° F
- 8 angled fluorescent light fixtures w/tubes 120/277V in single-bay models
- 16 angled fluorescent light fixtures w/tubes 120/277V in dual-bay models
- Pneumatic damper control
- 4-stage filtration system
- Exhaust duct - 15' ceiling (no roof flange)
- Controlled air flow ceiling
- Limited spraying capability
- Light wiring harness



#### Optional:

- Recirculation w/indirect fired only
- Support Structure

## CTOF Booths

### Downdraft and Semi-Downdraft

Closed-Top Open-Front Booths are the perfect solution for those shops looking for an all-in-one area where they can sand, grind, paint, and polish spot areas on multiple vehicles, without having to move from one location to another. These booths feature all the equipment of a Universal Workstation, include a special fire curtain, and have unlimited spraying capabilities.

#### Specifications:

- Single-bay or Dual-bay
- Drive-in/back-out or drive-thru (downdraft model only)
- White pre-coated galvanized steel
- BT 1200 FD with Curetronic control panel
- Recirculation w/ indirect fired only
- 8 angled fluorescent light fixtures w/tubes 120/277V in single-bay models
- 16 angled fluorescent light fixtures w/tubes 120/277V in dual-bay models
- Pneumatic damper control
- 4-stage filtration system
- Exhaust Duct - 15' ceiling (no roof flange)
- Controlled air flow ceiling
- Unlimited spraying capability
- Light wiring harness



#### Optional:

- Support Structure

**Unlimited Spraying Capability!**

# Prep Stations

## Global Finishing Solutions

### Plenums

#### Ultra Prep, Universal Workstations and CTOF's



<<< 12 Ft wide model  
#SUP241209



#### GFS Exclusive CAF Plenum!

With three air flow zones and integrated angled light fixtures. (available only with the 14 ft. wide model.)

<<< 14 Ft wide model  
#SUP241409

### Air Handling

#### Universal Workstations and CTOF

##### Industrial Heater Options:

- 1-10HP Direct Fired Burner, 1.2 million BTU (1.5 million BTU option)
- Indirect Fired Burners, 1.2 million BTU (1.5 million BTU option)

### CureTronic Control Panel

Easy-to-Use, fully programmable PLC control panel allows custom 'Heat vs. Time' cure cycles. Standard equipment on Universal Workstation and CTOF heaters.



**S = Standard Feature**  
**• = Optional Feature**  
**N/A = Not Available**

	Plenum	Lights	Curtain Walls	Solid Walls	Dual Bay	Drive-Thru	Heat System	Paint Capability	Wiring Harness	Support Structure
Standard Prep Above-Ground Exhaust	•	N/A	•	N/A	•	•	N/A	NONE	N/A	•
Standard Prep Downdraft	•	N/A	•	N/A	•	•	N/A	NONE	N/A	•
Ultra Prep Semi-Downdraft	S	S	•	•	•	N/A	N/A	NONE	S	•
Ultra Prep Downdraft	S	S	•	•	•	•	N/A	NONE	S	•
Universal Workstation Semi-Downdraft	S	S	•	•	•	N/A	•	LIMITED	S	•
Universal Workstation Downdraft	S	S	•	•	•	•	•	LIMITED	S	•
CTOF Semi-Downdraft	S	S	S	S	•	N/A	•	NO LIMIT	S	•
CTOF Downdraft	S	S	S	S	•	•	•	NO LIMIT	S	•

**NOTES:**  
All heated groups are supplied with vertical intake and exhaust ductwork for 15' ceiling. All CTOF configurations are equipped with solid panel sidewalls and safety curtain. Prep plenums cannot stand alone. They must either be hung from a roof or have an independent support structure

Consult your Global Finishing Solutions sales representative for details of required installation, concrete pit, electrical wiring, conduit, air piping, roof penetrations and automatic fire suppression. The equipment installation location should be reviewed and approved by the local authorities having jurisdiction. All designs, specifications and components are subject to change at the manufacturer's sole discretion at any time without notice. Data published herein is informational in nature and shall not be construed to warrant suitability of the unit for any particular purpose as performance may vary with the conditions encountered.



**Global Finishing Solutions • 800-468-5872 • auto@globalfinishing.com**

**Dallas, TX • Osseo, WI • Monterrey, MX • Barrie, ON**

**www.globalfinishing.com**